

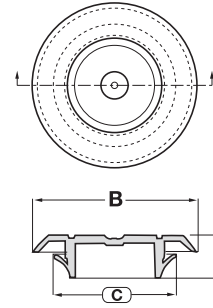
BPFE Series

Ergonomic Button Plugs with Flush-Type Heads

BPFE Series ergonomic button plugs with flush-type heads are designed to plug holes in sheet metal. The BPFE Series offers greater versatility because of the pliable nature of the material.

- One size plug fits a variety of different sized holes
- Quick and easy installation and removal

Material: FlexTemp (Thermoplastic Rubber) **Color:** Black



Ergonomic Button Plugs with Flush-Type Heads **BPFE Series**

Caplugs No.	Dimensions										Packaging	
	Hole Size		Metal Thickness		A		B		C		Carton Quantity	Mini Pak Quantity
	In	mm	In	mm	In	mm	In	mm	In	mm		
BPFE-15MM	.571 - .631	14.50 - 16.00	.031 - .079	.80 - 2.00	.315	8.00	.984	25.00	.709	18.00	5000	1000
BPFE-17MM	.650 - .709	15.20 - 18.00	.031 - .079	.80 - 2.00	.307	7.80	1.102	28.00	.799	20.30	5000	1000
BPFE-19MM	.728 - .787	18.50 - 20.00	.031 - .079	.80 - 2.00	.303	7.70	1.189	30.20	.886	22.50	5000	1000
BPFE-21MM	.807 - .866	20.50 - 22.00	.031 - .079	.80 - 2.00	.307	7.80	1.260	32.00	.957	24.30	5000	1000
BPFE-23MM	.866 - .945	22.50 - 24.00	.031 - .079	.80 - 2.00	.307	7.80	1.339	34.00	1.035	26.40	5000	1000
BPFE-25MM	.965 - 1.024	24.50 - 26.00	.031 - .079	.80 - 2.00	.295	7.50	1.378	35.00	1.102	28.00	5000	1000
BPFE-27MM	1.043 - 1.102	26.50 - 28.00	.031 - .079	.80 - 2.00	.307	7.80	1.496	38.00	1.193	30.30	2500	1000
BPFE-29MM	1.122 - 1.181	28.50 - 30.00	.031 - .079	.80 - 2.00	.307	7.80	1.575	40.00	1.272	32.30	2500	500
BPFE-31MM	1.201 - 1.260	30.50 - 32.00	.031 - .079	.80 - 2.00	.307	7.80	1.654	42.00	1.350	34.30	2500	500
BPFE-33MM	1.280 - 1.339	32.50 - 34.00	.031 - .079	.80 - 2.00	.307	7.80	1.732	44.00	1.429	36.30	2500	500
BPFE-36MM	1.398 - 1.437	35.50 - 36.50	.031 - .079	.07 - 3.00	.406	10.31	1.929	49.00	1.547	39.30	1500	n/a
BPFE-39MM	1.516 - 1.575	38.50 - 40.00	.031 - .079	.80 - 2.00	.307	7.80	1.917	48.70	1.654	42.00	2000	400