

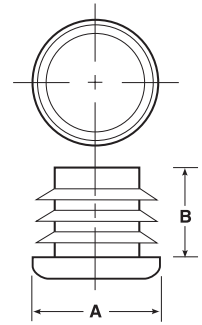
CCF Series

Plugs for Round Tubing

CCF Series plugs for round tubing feature tapered ribs to ensure a secure fit. Perfect for use on a wide range of metal furniture, appliances and similar items. A thick impact and abrasion resistant base make these plugs ideal tubing closures for products subject to heavy-duty service or exposure to adverse environments.

- Durable construction and excellent gliding edges
- Not subject to rust or corrosion

Material: Low-Density Polyethylene **Color:** Black



* Only available in HDPE

Plugs for Round Tubing CCF Series

Caplugs No.	Dimensions				Packaging	
	A-To Fit Tube Size O.D. In	Gage (Wall Thickness) In	B		Carton Quantity	Mini Pak Quantity
			In	mm		
CCF-1/2-13-14	.500	13 - 14 Ga. (.095 - .083)	.45	11.40	10000	1000
CCF-1/2-16-20	.500	16 - 20 Ga. (.065 - .035)	.45	11.43	10000	1000
CCF-5/8-10-12 DOME	.625	10 - 12 Ga. (.134 - .109)	.45	11.43	6000	1000
CCF-5/8-14-20	.625	14 - 20 Ga. (.083 - .035)	.44	11.18	5000	1000
CCF-3/4-14-20	.750	14 - 20 Ga. (.083 - .035)	.44	11.18	5000	1000
CCF-7/8-10-14	.875	10 - 14 Ga. (.134 - .083)	.44	11.20	4000	800
CCF-7/8-14-20	.875	14 - 20 Ga. (.083 - .035)	.44	11.18	4000	800
CCF-1-10-14	1.000	10 - 14 Ga. (.134 - .083)	.44	11.18	4000	800
CCF-1-14-20	1.000	14 - 20 Ga. (.083 - .035)	.44	11.18	4000	800
CCF-1-1/8-14-20	1.125	14 - 20 Ga. (.083 - .035)	.52	13.21	2500	500
CCF-1-1/4-10-14	1.250	10 - 14 Ga. (.134 - .083)	.52	13.21	1500	300
CCF-1-1/4-14-20	1.250	14 - 20 Ga. (.083 - .035)	.52	13.21	1500	300
CCF-RT-11	1.375	14 - 20 Ga. (.083 - .035)	.50	12.70	1500	300
CCF-1-1/2-8-12	1.500	8 - 12 Ga. (.165 - .109)	.52	13.21	1500	300
CCF-1-1/2-10-14	1.500	10 - 14 Ga. (.134 - .083)	.52	13.21	1500	300
CCF-1-1/2-14-20	1.500	14 - 20 Ga. (.083 - .035)	.52	13.21	1500	300
CCF-RT-13-1	1.625	10 - 14 Ga. (.134 - .083)	.50	12.70	1000	200
CCF-1-5/8-14-20	1.625	14 - 20 Ga. (.083 - .035)	.52	13.21	1000	200
CCF-1-3/4-10-14	1.750	10 - 14 Ga. (.134 - .083)	.59	14.99	1000	200
CCF-1-3/4-14-20	1.750	14 - 20 Ga. (.083 - .035)	.59	14.99	1000	200
CCF-RT-195-1	1.950	10 - 14 Ga. (.134 - .083)	.56	14.22	750	150
CCF-2-10-14	2.000	10 - 14 Ga. (.134 - .083)	.59	14.99	500	100
CCF-2-14-20	2.000	14 - 20 Ga. (.083 - .035)	.59	14.99	500	100
CCF-2-1/8-10-16	2.125	10 - 16 Ga. (.134 - .065)	.67	17.02	700	140
CCF-2-1/4-10-14	2.250	10 - 14 Ga. (.134 - .083)	.66	16.76	500	100
CCF-RT-18	2.250	14 - 20 Ga. (.083 - .035)	.69	17.53	500	100
CCF-2-3/8-10-14	2.375	10 - 14 Ga. (.134 - .083)	.66	16.76	400	80
CCF-2-1/2-8-12	2.500	8 - 12 Ga. (.165 - .109)	.69	17.53	400	80
CCF-2-1/2-14-20	2.500	14 - 20 Ga. (.083 - .035)	.69	17.53	400	80
CCF-RT-22-3*	2.750	7 - 10 Ga. (.180 - .134)	.84	21.34	250	50
CCF-RT-24-3	3.000	8 - 10 Ga. (.165 - .134)	.84	21.34	200	40
CCF-3-14-18	3.000	14 - 18 Ga. (.083 - .049)	.77	19.56	200	40
CCF-RT-30-3	3.500	7 - 12 Ga. (.180 - .109)	.77	19.56	150	30
CCF-4-4-8	4.000	4 - 8 Ga. (.238 - .165)	1.00	25.40	100	20
CCF-4-10-16	4.000	10 - 16 Ga. (.134 - .065)	1.00	25.40	100	20
CCF-RT-38	4.750	6 - 11 Ga. (.203 - .120)	1.10	27.94	60	12