

# GC Series

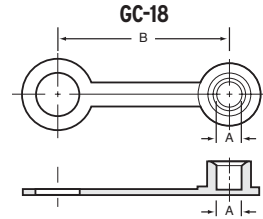
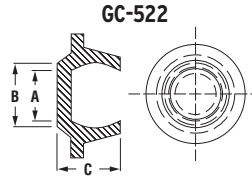
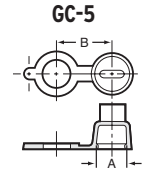
## Grease Caps

GC Series grease caps snap securely over fittings to seal out dirt and moisture. The integral retaining ring keeps the cap firmly in place during servicing. Color coding is also available to indicate the type and/or frequency of lubrication. The caps can be used for masks when spray painting.

- Available in tethered and non-tethered

**Material:** Low-Density Polyethylene  
**Colors:** Red, Blue, Yellow, Green, Black, White

**Note:** Please specify color preference for samples and purchase ordering.



Non-Tethered

Tethered



## Grease Caps GC Series

Caplugs No.	Dimensions						Packaging	
	A		B		C		Carton Quantity	Mini Pak Quantity
	In	mm	In	mm	In	mm		
GC-5	.234	5.94	.47	11.94	-	-	2500	500
GC-18	.227	5.77	1.52	38.61	-	-	2500	500
GC-522	.192	4.88	.25	6.35	.24	6.10	2500	500