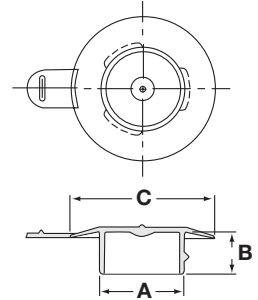


PIP-TAB Series

Push-In Plugs with Pull-Tab

PIP-TAB Series push-in plugs with pull-tabs are designed to fit SAE and NPT thread sizes. These parts offer the convenience of a push-in plug with the plugging quality of a threaded plug. PIP-TAB Series also have a convenient pull-tab for easy removal.

Material: Low-Density Polyethylene **Color:** Black

Push-In Plugs with Pull-Tab **PIP-TAB Series**

Caplugs No.	To Fit SAE Thread Size In	To Fit NPT Thread Size In	Dimensions						Packaging	
			A		B		C		Carton Quantity	Mini Pak Quantity
			In	mm	In	mm	In	mm		
PIP-3/8 TAB	3/8	1/8	.317	8.05	.24	6.10	.59	14.99	5000	1000
PIP-7/16 TAB	7/16	-	.370	9.40	.27	6.86	.64	16.26	5000	1000
PIP-1/2 TAB	1/2	1/4	.444	11.28	.27	6.86	.72	18.29	5000	1000
PIP-9/16 TAB	9/16	-	.500	12.70	.29	7.37	.81	20.57	5000	1000
PIP-5/8 TAB	5/8	3/8	.558	14.17	.29	7.37	.96	24.38	5000	1000
PIP-3/4 TAB	3/4	-	.681	17.30	.29	7.37	.95	24.13	5000	1000
PIP-7/8 TAB	7/8	-	.797	20.24	.29	7.37	1.15	29.21	5000	1000
PIP-1 5/8 TAB	1-5/8	-	1.525	38.74	.46	11.68	2.03	51.56	2000	400
PIP-1 7/8 TAB	1-7/8	-	1.775	45.09	.50	12.70	2.28	57.91	1500	300
PIP-1 7/16 TAB	1-7/16	-	1.337	-	.45	-	1.80	-	3000	600