

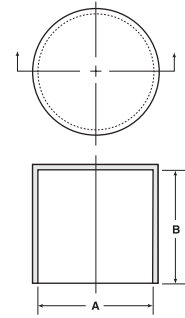
SC Series

Sleeve Caps for Tube Ends

Series SC Sleeve Caps are designed to fit outside diameters of tubing sizes listed with a snug friction grip. Available in over 128 different outside diameters and lengths, the SC Series is ideal for capping and protecting both threaded and non-threaded tubing or rod ends. They also make excellent masks for painting, plating or grit-blasting operations.

Material: Low-Density Polyethylene **Color:** Red

Applicable Specs: NAS 844



** Material for this part is Polyolefin Elastomer.

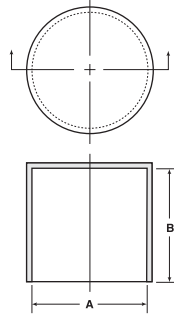
† Parts have external ribs.

†† Parts have internal ribs.

Sleeve Caps for Tube Ends **SC Series**

Caplugs No.	Dimensions				Packaging	
	A - Press Fit on O.D.		B		Carton Quantity	Mini Pak Quantity
	In	mm	In	mm		
SC-5/64**	.078	1.98	.50	12.70	5000	1000
SC-3/32	.094	2.38	.59	14.99	5000	1000
SC-1/8	.125	3.18	.59	14.99	5000	1000
SC-211-L	.125	3.18	.75	19.05	25000	5000
SC-5/32	.156	3.97	.56	14.22	5000	1000
SC-212-S	.172	4.37	.62	15.75	10000	2000
SC-3/16-5	.188	4.76	.35	8.89	5000	1000
SC-213-S	.188	4.78	.47	11.94	25000	5000
SC-3/16-10	.188	4.76	.59	14.99	5000	1000
SC-3/16-16	.188	4.76	1.00	25.40	5000	1000
SC-213-R	.203	5.16	.62	15.75	15000	3000
SC-7/32	.219	5.56	.75	19.05	5000	1000
SC-1/4-4	.250	6.35	.22	5.59	5000	1000
SC-1/4-7	.250	6.35	.44	11.18	5000	1000
SC-214-S	.250	6.35	.50	12.70	15000	3000
SC-1/4-14	.250	6.35	.88	22.35	5000	1000
SC-1/4-16	.250	6.35	1.00	25.40	5000	1000
SC-274-G	.266	6.76	.75	19.05	10000	2000
SC-9/32	.281	7.14	.75	19.05	5000	1000
SC-1805 ^{††}	.313	7.92	.38	9.65	18000	3600
SC-5/16	.313	7.94	.88	22.35	5000	1000
SC-216-T	.375	9.53	.46	11.68	20000	4000
SC-155 [†]	.375	9.53	.75	19.05	10000	2000
SC-3/8	.375	9.53	.88	22.35	5000	1000
SC-216-L	.375	9.53	1.12	28.45	7500	1500
SC-1030	.422	10.72	1.25	31.75	5000	1000
SC-773	.438	11.11	.22	5.59	15000	3000
SC-7/16-8	.438	11.11	.50	12.70	5000	1000
SC-159 [†]	.438	11.11	.62	15.75	10000	2000
SC-7/16-14	.438	11.11	.88	22.35	5000	1000
SC-217-L	.438	11.11	1.50	38.10	5000	1000
SC-7/16-16	.438	11.11	1.00	25.40	5000	1000
SC-157 [†]	.469	11.90	.75	19.05	7500	1500
SC-161 [†]	.500	12.70	.44	11.18	15000	3000
SC-1/2-8	.500	12.70	.50	12.70	5000	1000
SC-1/2-14	.500	12.70	.88	22.35	5000	1000
SC-1/2-24	.500	12.70	1.50	38.10	2500	500
SC-176 [†]	.563	14.27	.42	10.67	10000	2000
SC-9/16-9	.563	14.29	.56	14.22	5000	1000
SC-219-S	.563	14.27	.62	15.75	7500	1500
SC-9/16-14	.563	14.29	.88	22.35	5000	1000
SC-1868	.625	15.87	.64	16.26	6500	1300
SC-5/8	.625	15.88	.88	22.35	5000	1000
SC-981 ^{††}	.625	15.88	.88	22.35	5000	1000
SC-220-H	.625	15.88	.94	23.88	5000	1000
SC-220-U	.625	15.88	1.50	38.10	2000	400
SC-1834	.625	15.88	2.50	63.50	1000	200
SC-221-S	.688	17.48	.75	19.05	5000	1000
SC-11/16	.688	17.46	.88	22.35	5000	1000
SC-1775	.740	18.80	.88	22.35	3500	700
SC-222-S	.750	19.05	.38	9.65	7500	1500
SC-3/4	.750	19.05	.88	22.35	5000	1000
SC-3/4-16	.742	18.85	1.00	25.40	5000	1000
SC-222-H	.750	19.05	.94	23.88	2500	500
SC-222-L	.750	19.05	2.47	62.74	4000	800
SC-25/32	.781	19.84	1.00	25.40	5000	1000
SC-835	.813	20.65	.69	17.53	3500	700
SC-13/16	.813	20.64	.88	22.35	5000	1000

SC Series Sleeve Caps for Tube Ends (cont.)



Caplugs No.	Dimensions				Packaging	
	A - Press Fit on O.D.		B		Carton Quantity	Mini Pak Quantity
	In	mm	In	mm		
SC-201-T	.875	22.23	.62	15.75	2500	500
SC-201-S	.875	22.23	.62	15.75	3500	700
SC-7/8	.875	22.23	.88	22.35	5000	1000
SC-201-M	.875	22.23	1.75	44.45	1000	200
SC-748	.906	23.00	.75	19.05	2500	500
SC-1202	.906	23.83	.88	22.35	2500	500
SC-15/16	.938	23.81	1.00	25.40	2500	500
SC-15/16-23	.940	23.88	1.45	36.83	3000	600
SC-1784	1.000	25.40	.50	12.70	3500	700
SC-2003	1.000	25.40	.50	12.70	3500	700
SC-1364	1.000	25.40	.62	15.75	2000	400
SC-138	1.000	25.40	.75	19.05	2500	500
SC-1	1.000	25.40	1.00	25.40	2500	500
SC-138-L	1.000	25.40	1.75	44.45	1000	200
SC-1 1/16	1.063	26.99	1.00	25.40	2500	500
SC-224	1.125	28.58	.88	22.35	1500	300

Sleeve Caps for Tube Ends (cont.) SC Series

Caplugs No.	Dimensions				Packaging	
	A - Press Fit on O.D.		B		Carton Quantity	Mini Pak Quantity
	In	mm	In	mm		
SC-1 1/8	1.125	28.58	1.00	25.40	2500	500
SC-1 1/8-21	1.125	28.58	1.31	33.27	2000	400
SC-1 3/16	1.188	30.16	1.00	25.40	2500	500
SC-289-S	1.250	31.75	.50	12.70	2000	400
SC-1831	1.250	31.75	.87	22.10	1000	200
SC-1 1/4	1.250	31.75	1.00	25.40	2000	400
SC-289-M	1.250	31.75	1.50	38.10	700	140
SC-289-L	1.250	31.75	1.75	44.45	500	100
SC-1 5/16-12	1.313	33.34	.75	19.05	3000	600
SC-1 5/16	1.313	33.34	1.00	25.40	1000	200
SC-760	1.375	35.00	.62	15.75	1000	200
SC-1 3/8	1.375	34.92	1.00	25.40	1000	200
SC-428	1.375	35.00	1.50	38.10	500	100
SC-428-2	1.375	35.00	1.59	40.39	500	100
SC-1975	1.500	38.10	.87	22.10	1000	200
SC-1 1/2	1.500	38.10	1.00	25.40	1000	200
SC-290-L	1.500	38.10	1.75	44.45	500	100
SC-1 5/8	1.625	41.28	1.00	25.40	1000	200
SC-291-L	1.625	41.28	1.25	31.75	500	100
SC-291-2	1.719	43.65	1.00	25.40	500	100
SC-1008	1.750	44.45	.88	22.35	500	100
SC-1 3/4	1.750	44.45	1.00	25.40	1000	200
SC-291-3	1.844	46.84	1.21	30.73	500	100
SC-1 7/8	1.875	47.63	1.00	25.40	1000	200
SC-1 29/32	1.906	48.41	1.00	25.40	1000	200
SC-2	2.000	50.80	.88	22.35	1000	200
SC-226	2.000	50.80	1.00	25.40	1000	200
SC-226-L	2.000	50.80	1.53	38.86	250	50
SC-1025	2.125	53.98	.50	12.70	1000	200
SC-2 1/8	2.125	53.98	1.00	25.40	500	100
SC-2 1/4	2.250	57.15	.88	22.35	500	100
SC-1365	2.250	57.15	1.00	25.40	300	60
SC-2 3/8	2.375	60.33	.88	22.35	500	100
SC-2 1/2	2.500	63.50	.88	22.35	500	100
SC-2 9/16	2.563	65.10	1.00	25.40	500	100
SC-372	2.609	66.27	1.00	25.40	1000	200
SC-2 5/8	2.625	66.68	1.00	25.40	500	100
SC-2 3/4	2.750	69.85	1.00	25.40	500	100
SC-3	3.000	76.20	1.00	25.40	450	90
SC-3 1/16	3.062	77.77	2.00	50.80	200	40
SC-3 1/8	3.125	79.38	1.38	35.05	250	50
SC-1528	3.250	82.55	1.00	25.40	800	160
SC-3 5/16	3.313	84.14	1.00	25.40	400	100
SC-1563	3.438	87.31	1.00	25.40	700	140
SC-1521	3.500	88.90	1.00	25.40	600	120
SC-3 1/2	3.500	88.90	1.38	35.05	250	50
SC-2215	3.531	89.69	2.00	50.80	300	60
SC-3 5/8	3.625	92.08	1.38	35.05	250	50
SC-3 3/4	3.750	95.25	1.38	35.05	200	40
SC-1540	4.000	101.60	1.13	28.70	500	100
SC-4	4.000	101.60	1.38	35.05	250	50
SC-4 1/8	4.125	104.78	1.50	38.10	120	24
SC-4 1/2	4.500	114.30	1.44	36.58	100	20
SC-1400	4.813	122.25	.64	16.26	500	100
SC-1363	4.875	123.83	.92	23.37	350	70
SC-5 1/8	5.125	130.18	1.63	41.40	100	20
SC-5 1/4	5.250	133.36	1.80	45.72	50	n/a
SC-324-3	8.000	203.20	2.30	58.42	40	8