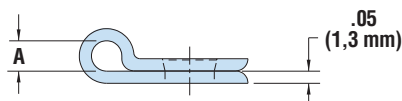
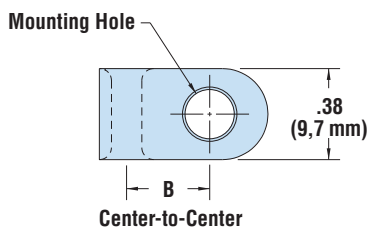
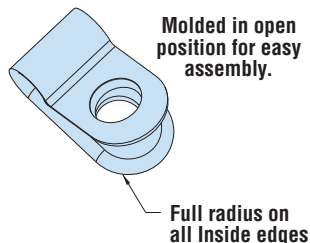




- For clamping cable or tubing securely into place.
- Resist corrosion, salt water, weak acids, gasoline, alcohol, oil, grease, and common solvents. (This feature is not assessed by UL certification or testing.)
- All parts are size marked in inches and millimeters.
- Standard material Nylon 6/6. 94V-0 available, consult Heyco.
- For Snap Rivets compatible with Heyco Cable Clamps, see the table on page 7-37.



## Heyco® Nylon Cable Clamps

MOUNTING HOLE DIAMETER		SCREW SIZE	PART DIMENSION A		PART NO. V-2*		DESCRIPTION	CENTER-TO-CENTER DIMENSION B	
in.	mm.		in.	mm.	Black	Natural		in.	mm.
<b>Light Duty - 3/8" (9,5 mm) wide, .05" (1,3 mm) thick</b>									
.170	4,3	8	.125	3,2	<b>3362</b>	<b>3312</b>	CCL 125-170	.36	9,1
			.187	4,7	<b>3363</b>	<b>3313</b>	CCL 187-170	.39	9,9
			.250	6,3	<b>3364</b>	<b>3314</b>	CCL 250-170	.42	10,7
			.312	7,9	<b>3365</b>	<b>3315</b>	CCL 312-170	.46	11,7
			.375	9,5	<b>3366</b>	<b>3316</b>	CCL 375-170	.49	12,4
			.437	11,1	<b>3367</b>	<b>3317</b>	CCL 437-170	.53	13,5
.203	5,2	10	.500	12,7	<b>3368</b>	<b>3318</b>	CCL 500-170	.55	14,0
			.125	3,2	<b>3352</b>	<b>3302</b>	CCL 1/8	.34	8,6
			.187	4,7	<b>3353</b>	<b>3303</b>	CCL 3/16	.38	9,7
			.250	6,3	<b>3354</b>	<b>3304</b>	CCL 1/4	.41	10,4
			.312	7,9	<b>3355</b>	<b>3305</b>	CCL 5/16	.44	11,2
			.375	9,5	<b>3356</b>	<b>3306</b>	CCL 3/8	.48	12,2
.203	5,2	10	.437	11,1	<b>3357</b>	<b>3307</b>	CCL 7/16	.51	13,0
			.500	12,7	<b>3358</b>	<b>3308</b>	CCL 1/2	.53	13,5
			.125	3,2	<b>3372</b>	<b>3322</b>	CCH 1/8	.37	9,4
			.187	4,8	<b>3373</b>	<b>3323</b>	CCH 3/16	.41	10,4
			.250	6,3	<b>3374</b>	<b>3324</b>	CCH 1/4	.44	11,2
			.312	7,9	<b>3375</b>	<b>3325</b>	CCH 5/16	.48	12,2
			.375	9,5	<b>3376</b>	<b>3326</b>	CCH 3/8	.51	13,0
			.437	11,1	<b>3377</b>	<b>3327</b>	CCH 7/16	.54	13,7
			.500	12,7	<b>3378</b>	<b>3328</b>	CCH 1/2	.58	14,7
			.562	14,3	<b>3379</b>	<b>3329</b>	CCH 9/16	.61	15,5
			.625	15,9	<b>3380</b>	<b>3330</b>	CCH 5/8	.65	16,5
			.687	17,4	<b>3381</b>	<b>3331</b>	CCH 11/16	.68	17,3
			.750	19,1	<b>3382</b>	<b>3332</b>	CCH 3/4	.71	18,0
			.812	20,6	<b>3383</b>	<b>3333</b>	CCH 13/16	.75	19,1
.875	22,2	<b>3384</b>	<b>3334</b>	CCH 7/8	.78	19,8			
1.000	25,4	<b>3390</b>	<b>3340</b>	CCH 1	.85	21,6			
1.125	28,6	<b>3392</b>	<b>3342</b>	CCH 1-1/8	.92	23,4			
1.187	30,1	<b>3393</b>	<b>3343</b>	CCH 1-3/16	.95	24,1			
1.250	31,8	<b>3394</b>	<b>3344</b>	CCH 1-1/4	.99	25,1			
1.375	34,9	<b>3396</b>	<b>3346</b>	CCH 1-3/8	1.05	26,7			
1.500	38,1	<b>3398</b>	<b>3348</b>	CCH 1-1/2	1.12	28,4			
<b>Adjustable - 1/2" (12,7 mm) wide, .065" (1,7 mm) thick</b>									
<b>NEW!</b>	.203	5,2	10	1.75 - 2.00	44,5 - 50,8	-	<b>3755</b>	ACC 1750-2000	

Standard colors black and natural.  
\*Consult Heyco for V-O parts (not shown)

Quick Specs

Material	Nylon 6/6
Certifications	Recognized under the Component Program of Underwriters' Laboratories File E54523
Flammability Rating	94V-2
Temperature Range	32°F (0°C) to 221°F (105°C) - Black 32°F (0°C) to 185°F (85°C) - Natural

“Stay Connected” with



HEYware Products

a PennEngineering® Company

## Snap Rivet Table - for use with Heyco® Nylon Cable Clamps

For our complete line of Snap Rivets, see pages 7-76 & 7-77



PANEL THICKNESS				PART NO.			DESCRIPTION
Minimum		Maximum		Black	White	V-0 Black	
in.	mm.	in.	mm.				
For .170" (4,3 mm) Mounting Hole, Light Duty Cable Clamps							
.08	2,0	.12	3,0	9062	9063	9062F	PR 161-177
.12	3,0	.16	4,1	9064	9065	9064F	PR 161-217
.16	4,1	.20	5,1	9066	9067	9066F	PR 161-256
.20	5,1	.24	6,1	9068	9069	9068F	PR 161-295
.25	6,4	.31	7,9	9318	9319	9318F	PR 161-354
.39	9,9	.45	11,4	9320	9321	9320F	PR 161-492
For .203" (5,2 mm) Mounting Hole, Light or Heavy Duty Cable Clamps							
.06	1,5	.10	2,5	9076	9077	9076F	PR 201-177
.10	2,5	.14	3,6	9078	9079	9078F	PR 201-217
.14	3,6	.18	4,6	9080	9081	9080F	PR 201-256
.18	4,6	.22	5,6	9082	9083	9082F	PR 201-295

Material	Nylon 6/6
Flammability Rating	94V-2
Temperature Range	-40°F (-40°C) to 239°F (115°C)

Quick  
Specs