

“Stay Connected” with



Strain Relief Bushings

a PennEngineering® Company



ALL NEW PRODUCTS!

## Heyco® Romex® Nylon Snap-in Strain Relief Box Connectors

The Ultimate in Snap-In Strain Relief Protection For Romex® NM-B Cables

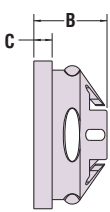
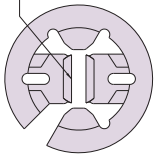
- Snap into mounting holes with fingertip pressure.
- Securely anchors, insulates and protects cables at panel or box entry points.
- Accepts one or two NM cables, installed together or individually.
- Withstands up to a 25 pound pull force on a cable even with two cables installed.
- Add a second cable without removing the first.
- Molded from electrically non-conductive Nylon 6/6.
- Reusable.
- cULus pending for UL 514B.

WILL FIT THESE CABLES		PANEL or BOX DIMENSIONS				PART NO.	DESCRIPTION	PART DIMENSIONS			
Romex® Type	AWG/Conductor Combinations	A Mounting Hole Dia.		Max. Panel Thickness				B		C	
		in.	mm.	in.	mm.	Black		in.	mm.	in.	mm.
NM-B	One 14/2 One 12/2 Two 14/2 Two 12/2 One 14/2 & One 12/2	.875	22,2	.08	2,0	1046	SRNM 1/2	.50	12,7	.13	3,3
NMD-90	One 14/2 One 12/2										

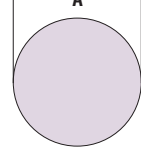
Standard color black.

Material	Nylon 6/6
Certifications	cULus UL Listed under Underwriter's Laboratories File 103540
Flammability Rating	94V-2
Temperature Rating	-22°F (-30°C) to 212°F (100°C)

DESIGNED FOR USE WITH NM CABLES



SUGGESTED CLEARANCE HOLE



- Extra pull-out resistance
- For Heyco Liquid Tight Clamping Cordgrips, see page 3-45.
- Locknuts not included. For metal locknut specifications or to order locknuts separately, see page 3-48.

## Heyco® Brass Clamping Strain Relief Box Connectors

CABLE DIAMETER RANGE				PART NO.	THREAD SIZE	PART DIMENSIONS							
Minimum		Maximum				A Clearance Hole Dia.	B Max. O.A. Length		C Thread Length		D Wrenching Flat Size		
in.	mm.	in.	mm.		in.	mm.	in.	mm.	in.	mm.	in.	mm.	

### PG Hubs

.157	4,0	.315	8,0	14875	PG7	.492	12,5	.59	15,0	.24	6,0	.67	17
.236	6,0	.394	10,0	14876	PG9	.598	15,2	.67	17,0	.24	6,0	.79	20
.236	6,0	.472	12,0	14877	PG11	.732	18,6	.67	17,0	.24	6,0	.87	22
.276	7,0	.591	15,0	14878	PG13	.827	21,0	.71	18,0	.28	7,0	.94	24
.354	9,0	.669	17,0	14879	PG16	.886	22,5	.75	19,0	.28	7,0	1.06	27
.472	12,0	.866	22,0	14880	PG21	1.114	28,3	.87	22,0	.31	8,0	1.38	35
.709	18,0	1.181	30,0	14881	PG29	1.469	37,3	.91	23,0	.31	8,0	1.65	42
.945	24,0	1.417	36,0	14882	PG36	1.874	47,6	1.10	28,0	.39	10,0	2.17	55

### Metric Hubs

.197	5,0	.315	8,0	14884	M12 x 1,5	.472	12,0	.79	20,0	.39	10,0	.63	16
.236	6,0	.413	10,5	14885	M16 x 1,5	.630	16,0	.83	21,0	.39	10,0	.75	19
.315	8,0	.591	15,0	14886	M20 x 1,5	.787	20,0	.87	22,0	.39	10,0	.94	24
.492	12,5	.807	20,5	14887	M25 x 1,5	.984	25,0	.94	24,0	.43	11,0	1.18	30
.669	17,0	1.004	25,5	14888	M32 x 1,5	1.260	32,0	1.10	28,0	.51	13,0	1.42	36
.945	24,0	1.299	33,0	14889	M40 x 1,5	1.575	40,0	1.18	30,0	.51	13,0	1.81	46

Material	Nickel-Plated Brass body with Stainless Steel screws
Temperature Rating	-58°F (-50°C) to 572°F (300°C)
IP Rating	IP 20

